

PACO16665

Product Information

Size:

50ul

Reactivity:

Chicken

Source:

Rabbit

Isotype:

IgG

Applications:

ELISA, WB

Recommended dilutions:

ELISA:1:2000-1:5000, WB:1:500-1:2000

Protein Background:

Ovalbumin (abbreviated OVA) is the main protein found in egg white, making up 60-65% of the total protein. Ovalbumin displays sequence and three-dimensional homology to the serpin superfamily, but unlike most serpins it is not a serine protease inhibitor. It is presumed to be a storage protein.

Gene ID:

SERPINB14

Uniprot

P01012

Synonyms:

ovalbumin (SERPINB14)

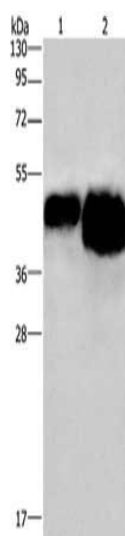
Immunogen:

OVAL protein.

Storage:

-20° C, pH7.4 PBS, 0.05% NaN₃, 40% Glycerol

Product Images



Gel: 10%SDS-PAGE, Lysate: 0.4 μ g, 0.8 μ g, Lane 1-2: 0.4 μ g, 0.8 μ g OVAL protein, Primary antibody: PACO16665(OVAL Antibody) at dilution 1/500, Secondary antibody: Goat anti rabbit IgG at 1/8000 dilution, Exposure time: 3 seconds.