

Product Information

Size:

50ul

Reactivity:

Human

Source:

Rabbit

Isotype:

IgG

Applications:

ELISA, WB, IHC

Recommended dilutions:

ELISA:1:1000-1:2000, WB:1:200-1:1000,
IHC:1:50-1:200

Protein Background:

MCTS1 (malignant T cell amplified sequence 1), also known as MCT1, is a 181 amino acid, protein that is ubiquitously expressed and localizes to the cytoplasm of cells. MCTS1 may play a role in cell cycle regulation by decreasing cell doubling time and by shortening the duration of G1 transit time and G1/S transition. The protein level of Cdk4 and Cdk6 kinases activity and cyclin D1 is enhanced by expression of MCTS1. As a translation enhancer, MCTS1 recruits DENR and binds to the cap complex of the 5'-terminus of mRNAs, subsequently altering the mRNA translation profile. MCTS1 promotes lymphoid tumor development and contributes to the pathogenesis and progression of breast cancer. MCTS1 positively regulates phosphorylation of ERK1 and ERK2.

Gene ID:

MCTS1

Uniprot

Q9ULC4

Synonyms:

malignant T cell amplified sequence 1

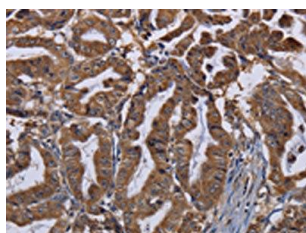
Immunogen:

Fusion protein of human MCTS1.

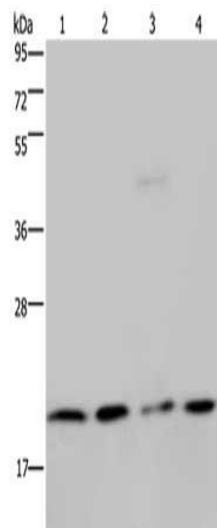
Storage:

-20° C, pH7.4 PBS, 0.05% NaN3, 40% Glycerol

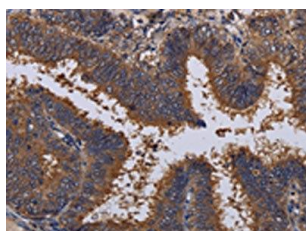
Product Images



The image on the left is immunohistochemistry of paraffin-embedded Human esophagus cancer tissue using PACO16661(MCTS1 Antibody) at dilution 1/30, on the right is treated with fusion protein. (Original magnification: x—200).



Gel: 10%SDS-PAGE, Lysate: 40 μ g, Lane 1-4: Jurkat cells, K562 cells, PC3 cells, A549 cells, Primary antibody: PACO16661(MCTS1 Antibody) at dilution 1/200, Secondary antibody: Goat anti rabbit IgG at 1/8000 dilution, Exposure time: 3 minutes.



The image on the left is immunohistochemistry of paraffin-embedded Human colon cancer tissue using PACO16661(MCTS1 Antibody) at dilution 1/30, on the right is treated with fusion protein. (Original magnification: x—200).