

MAGEB10 Antibody



PACO16645

Product Information

Size:

50ul

Reactivity:

Human

Source:

Rabbit

Isotype:

IgG

Applications:

ELISA, IHC

Recommended dilutions:

ELISA:1:2000-1:10000, IHC:1:100-1:300

Protein Background:

This gene encodes a member of the B subfamily of the melanoma associated antigen protein family. The encoded protein is specifically expressed in testis and tumor cells.

Gene ID:

MAGEB10

Uniprot

Q96LZ2

Synonyms:

melanoma antigen family B, 10

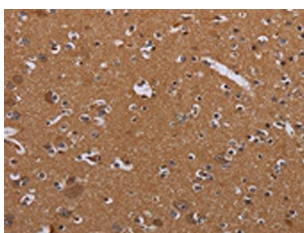
Immunogen:

Fusion protein of human MAGEB10.

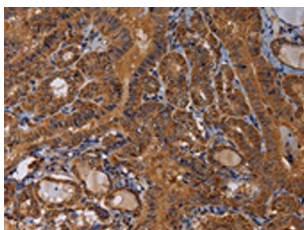
Storage:

-20° C, pH7.4 PBS, 0.05% NaN₃, 40% Glycerol

Product Images



The image on the left is immunohistochemistry of paraffin-embedded Human brain tissue using PACO16645(MAGEB10 Antibody) at dilution 1/60, on the right is treated with fusion protein. (Original magnification: x—200).



The image on the left is immunohistochemistry of paraffin-embedded Human thyroid cancer tissue using PACO16645(MAGEB10 Antibody) at dilution 1/60, on the right is treated with fusion protein. (Original magnification: x—200).