

Product Information

Size:

50ul

Reactivity:

Human, Mouse, Rat

Source:

Rabbit

Isotype:

IgG

Applications:

ELISA, WB, IHC

Recommended dilutions:

ELISA:1:1000-1:2000, WB:1:200-1:1000,
IHC:1:50-1:200

Protein Background:

LRRC57 (leucine rich repeat containing 57) is a 239 amino acid, protein that contains eight LRR repeats and is encoded by a gene that maps to human chromosome 15q15.2. Chromosome 15 houses over 700 genes and comprises nearly 3% of the human genome. Angelman syndrome, Prader-Willi syndrome, Tay-Sachs disease and Marfan syndrome are all associated with defects in chromosome 15-localized genes.

Gene ID:

LRRC57

Uniprot

Q8N9N7

Synonyms:

leucine rich repeat containing 57

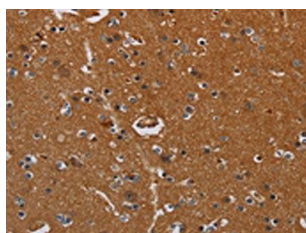
Immunogen:

Fusion protein of human LRRC57.

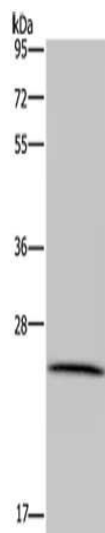
Storage:

-20° C, pH7.4 PBS, 0.05% NaN₃, 40% Glycerol

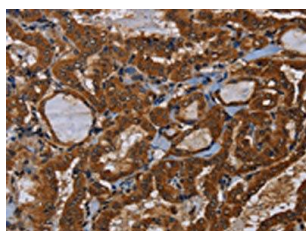
Product Images



The image on the left is immunohistochemistry of paraffin-embedded Human brain tissue using PACO16633(LRRC57 Antibody) at dilution 1/40, on the right is treated with fusion protein. (Original magnification: x—200).



Gel: 10%SDS-PAGE, Lysate: 40 μ g, Lane: HT29 cells, Primary antibody: PACO16633(LRRC57 Antibody) at dilution 1/200, Secondary antibody: Goat anti rabbit IgG at 1/8000 dilution, Exposure time: 5 minutes.



The image on the left is immunohistochemistry of paraffin-embedded Human thyroid cancer tissue using PACO16633(LRRC57 Antibody) at dilution 1/40, on the right is treated with fusion protein. (Original magnification: x—200).