

Product Information

Size:

50ul

Reactivity:

Human

Source:

Rabbit

Isotype:

IgG

Applications:

ELISA, WB, IHC

Recommended dilutions:

ELISA:1:2000-1:5000, WB:1:500-1:2000,
IHC:1:50-1:200

Protein Background:

The protein encoded by this gene belongs to the ERG4/ERG24 family. It localized in the nuclear envelope inner membrane and anchors the lamina and the heterochromatin to the membrane. It may mediate interaction between chromatin and lamin B. Mutations of this gene has been associated with autosomal recessive HEM/Greenberg skeletal dysplasia. Alternative splicing occurs at this locus and two transcript variants encoding the same protein have been identified.

Gene ID:

LBR

Uniprot

Q14739

Synonyms:

lamin B receptor

Immunogen:

Fusion protein of human LBR.

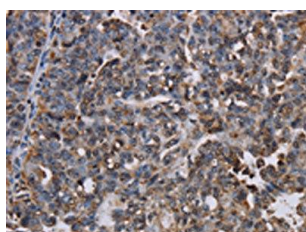
Storage:

-20° C, pH7.4 PBS, 0.05% NaN3, 40% Glycerol

Product Images



Gel: 6%SDS-PAGE, Lysate: 40 μ g, Lane: Human fetal brain tissue, Primary antibody: PACO16606(LBR Antibody) at dilution 1/300, Secondary antibody: Goat anti rabbit IgG at 1/8000 dilution, Exposure time: 3 minutes.



The image on the left is immunohistochemistry of paraffin-embedded Human ovarian cancer tissue using PACO16606(LBR Antibody) at dilution 1/50, on the right is treated with fusion protein. (Original magnification: x—200).