

PACO16595

---

## Product Information

**Size:**

50ul

**Reactivity:**

Human, Mouse

**Source:**

Rabbit

**Isotype:**

IgG

**Applications:**

ELISA, WB

**Recommended dilutions:**

ELISA:1:1000-1:2000, WB:1:200-1:1000

**Protein Background:**

The BTB (Broad-Complex, Tramtrack and Bric a brac) domain, also known as the POZ (Poxvirus and Zinc finger) domain, is an N-terminal homodimerization domain that contains multiple copies of kelch repeats and/or C2H2-type zinc fingers. Proteins that contain BTB domains are thought to be involved in transcriptional regulation via control of chromatin structure and function. KLHL9 (kelch-like 9) is a 617 amino acid, protein containing one BACK (BTB/kelch associated) domain, six kelch repeats and a BTB/POZ domain. KLHL9 is believed to play a role in protein ubiquitination and may function as a substrate-specific adapters of an E3 ubiquitin-protein ligase complex with CUL-3.

**Gene ID:**

KLHL9

**Uniprot**

Q9P2J3

**Synonyms:**

kelch-like family member 9

**Immunogen:**

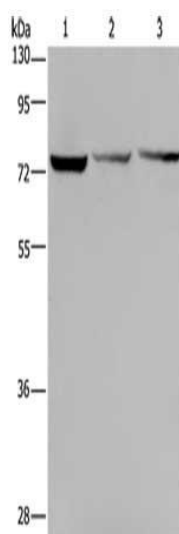
Fusion protein of human KLHL9.

**Storage:**

-20&deg; C, pH7.4 PBS, 0.05% NaN3, 40% Glycerol

## Product Images

---



Gel: 8%SDS-PAGE, Lysate: 40  $\mu$ g, Lane 1-3: HeLa cells, SKOV3 cells, Jurkat cells, Primary antibody: PACO16595(KLHL9 Antibody) at dilution 1/300, Secondary antibody: Goat anti rabbit IgG at 1/8000 dilution, Exposure time: 1 minute.