

KLHL2 Antibody



PACO16593

Product Information

Size:

50ul

Reactivity:

Human, Mouse, Rat

Source:

Rabbit

Isotype:

IgG

Applications:

ELISA, WB, IHC

Recommended dilutions:

ELISA:1:1000-1:2000, WB:1:200-1:1000,
IHC:1:25-1:100

Protein Background:

KLHL2 (kelch-like protein 2), also known as actin-binding protein Mayven, is a 593 amino acid, actin-binding protein. Highly expressed in brain, KLHL2 is thought to play a role in the organization of the actin cytoskeleton in brain cells.

Gene ID:

KLHL2

Uniprot

O95198

Synonyms:

kelch-like family member 2

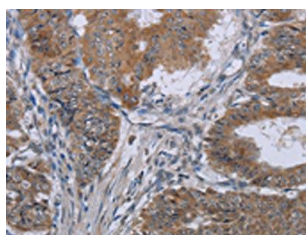
Immunogen:

Fusion protein of human KLHL2.

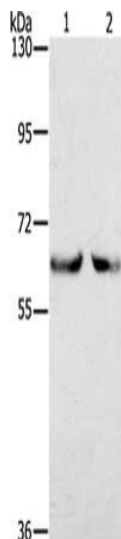
Storage:

-20°C; C, pH7.4 PBS, 0.05% NaN₃, 40% Glycerol

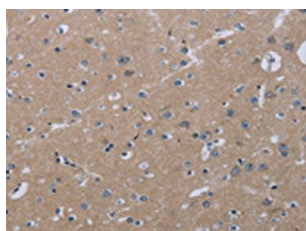
Product Images



The image on the left is immunohistochemistry of paraffin-embedded Human esophagus cancer tissue using PACO16593(KLHL2 Antibody) at dilution 1/20, on the right is treated with fusion protein. (Original magnification: x—200).



Gel: 6%SDS-PAGE, Lysate: 100 μ g, Lane 1-2: Jurkat cells, K562 cells, Primary antibody: PACO16593(KLHL2 Antibody) at dilution 1/200, Secondary antibody: Goat anti rabbit IgG at 1/8000 dilution, Exposure time: 2 minutes.



The image on the left is immunohistochemistry of paraffin-embedded Human brain tissue using PACO16593(KLHL2 Antibody) at dilution 1/20, on the right is treated with fusion protein. (Original magnification: x—200).