

# KLHL1 Antibody



PACO16591

---

## Product Information

**Size:**

50ul

**Reactivity:**

Human, Mouse

**Source:**

Rabbit

**Isotype:**

IgG

**Applications:**

ELISA, WB

**Recommended dilutions:**

ELISA:1:1000-1:2000, WB:1:200-1:1000

**Protein Background:**

The KLHL1 protein belongs to a family of actin-organizing proteins related to Drosophila Kelch.

**Gene ID:**

KLHL1

**Uniprot**

Q8TBJ7

**Synonyms:**

kelch-like family member 1

**Immunogen:**

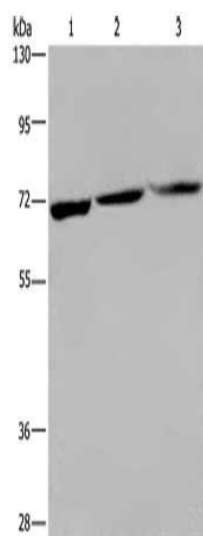
Fusion protein of human KLHL1.

**Storage:**

-20&deg; C, pH7.4 PBS, 0.05% NaN<sub>3</sub>, 40% Glycerol

## Product Images

---



Gel: 6%SDS-PAGE, Lysate: 40  $\mu$ g, Lane 1-3: 293T cells, PC3 cells, Jurkat cells, Primary antibody: PACO16591(KLHL1 Antibody) at dilution 1/200, Secondary antibody: Goat anti rabbit IgG at 1/8000 dilution, Exposure time: 2 minutes.