

# KIF2A Antibody



PACO16587

---

## Product Information

**Size:**

50ul

**Reactivity:**

Human, Mouse, Rat

**Source:**

Rabbit

**Isotype:**

IgG

**Applications:**

ELISA, WB, IHC

**Recommended dilutions:**

ELISA:1:1000-1:2000, WB:1:200-1:1000,  
IHC:1:100-1:300

**Protein Background:**

The protein encoded by this gene is a plus end-directed motor required for normal mitotic progression. The encoded protein is required for normal spindle activity during mitosis and is necessary for normal brain development. Several transcript variants encoding different isoforms have been found for this gene.

**Gene ID:**

KIF2A

**Uniprot**

O00139

**Synonyms:**

kinesin heavy chain member 2A

**Immunogen:**

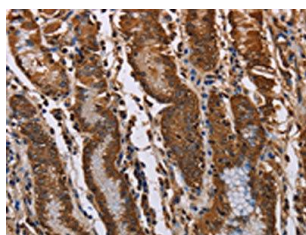
Fusion protein of human KIF2A.

**Storage:**

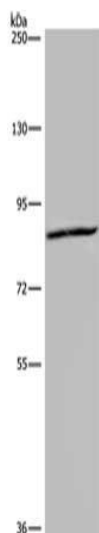
-20°C; C, pH7.4 PBS, 0.05% NaN<sub>3</sub>, 40% Glycerol

## Product Images

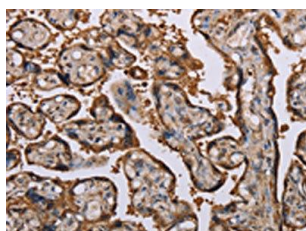
---



The image on the left is immunohistochemistry of paraffin-embedded Human gastric cancer tissue using PACO16587(KIF2A Antibody) at dilution 1/70, on the right is treated with fusion protein. (Original magnification: x—200).



Gel: 6%SDS-PAGE, Lysate: 40 &mu; g, Lane: HeLa cells, Primary antibody: PACO16587(KIF2A Antibody) at dilution 1/350, Secondary antibody: Goat anti rabbit IgG at 1/8000 dilution, Exposure time: 20 seconds.



The image on the left is immunohistochemistry of paraffin-embedded Human placenta tissue using PACO16587(KIF2A Antibody) at dilution 1/70, on the right is treated with fusion protein. (Original magnification: x—200).