

# IL31RA Antibody



PACO16543

---

## Product Information

**Size:**

50ul

**Reactivity:**

Human

**Source:**

Rabbit

**Isotype:**

IgG

**Applications:**

ELISA, WB, IHC

**Recommended dilutions:**

ELISA:1:1000-1:2000, WB:1:200-1:1000,  
IHC:1:25-1:100

**Protein Background:**

The protein encoded by this gene belongs to the type I cytokine receptor family. This receptor, with homology to gp130, is expressed on monocytes, and is involved in IL-31 signaling via activation of STAT-3 and STAT-5. It functions either as a monomer, or as part of a receptor complex with oncostatin M receptor (OSMR). Several alternatively spliced transcript variants encoding different isoforms have been noted for this gene.

**Gene ID:**

IL31RA

**Uniprot**

Q8NI17

**Synonyms:**

interleukin 31 receptor A

**Immunogen:**

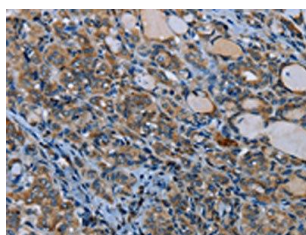
Fusion protein of human IL31RA.

**Storage:**

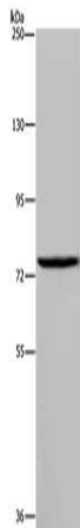
-20&deg; C, pH7.4 PBS, 0.05% NaN3, 40% Glycerol

## Product Images

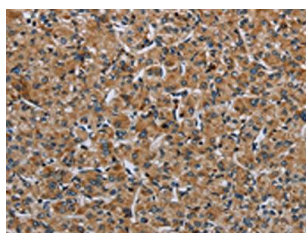
---



The image on the left is immunohistochemistry of paraffin-embedded Human thyroid cancer tissue using PACO16543(IL31RA Antibody) at dilution 1/30, on the right is treated with fusion protein. (Original magnification: x—200).



Gel: 6%SDS-PAGE, Lysate: 40 &mu; g, Lane: Jurkat cells, Primary antibody: PACO16543(IL31RA Antibody) at dilution 1/250, Secondary antibody: Goat anti rabbit IgG at 1/8000 dilution, Exposure time: 10 minutes.



The image on the left is immunohistochemistry of paraffin-embedded Human prostate cancer tissue using PACO16543(IL31RA Antibody) at dilution 1/30, on the right is treated with fusion protein. (Original magnification: x—200).