

PACO16529

Product Information

Size:

50ul

Reactivity:

Human, Mouse

Source:

Rabbit

Isotype:

IgG

Applications:

ELISA, WB, IHC

Recommended dilutions:

ELISA:1:1000-1:2000, WB:1:200-1:1000,
IHC:1:50-1:200

Protein Background:

IKBKE is a noncanonical I-kappa-B (see MIM 164008) kinase (IKK) that is essential for regulating antiviral signaling pathways. IKBKE has also been identified as a breast cancer (MIM 114480) oncogene and is amplified and overexpressed in over 30% of breast carcinomas and breast cancer cell lines (Hutti et al. , 2009).

Gene ID:

IKBKE

Uniprot

Q14164

Synonyms:

inhibitor of κ ; light polypeptide gene enhancer in B-cells, kinase epsilon

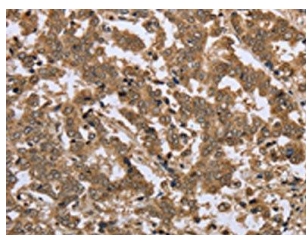
Immunogen:

Fusion protein of human IKBKE.

Storage:

-20 $\text{\textcircled{C}}$; C, pH7.4 PBS, 0.05% NaN₃, 40% Glycerol

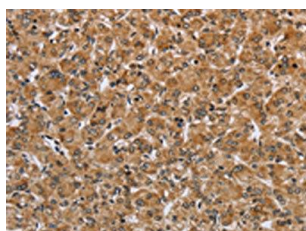
Product Images



The image on the left is immunohistochemistry of paraffin-embedded Human liver cancer tissue using PACO16529(IKBKE Antibody) at dilution 1/25, on the right is treated with fusion protein. (Original magnification: x—200).



Gel: 6%SDS-PAGE, Lysate: 50 μ g, Lane: Raji cells, Primary antibody: PACO16529(IKBKE Antibody) at dilution 1/400, Secondary antibody: Goat anti rabbit IgG at 1/8000 dilution, Exposure time: 30 seconds.



The image on the left is immunohistochemistry of paraffin-embedded Human prostate cancer tissue using PACO16529(IKBKE Antibody) at dilution 1/25, on the right is treated with fusion protein. (Original magnification: x—200).