

# HACL1 Antibody



PACO16478

---

## Product Information

**Size:**

50ul

**Reactivity:**

Human, Mouse, Rat

**Source:**

Rabbit

**Isotype:**

IgG

**Applications:**

ELISA, WB, IHC

**Recommended dilutions:**

ELISA:1:1000-1:2000, WB:1:200-1:1000,  
IHC:1:50-1:200

**Protein Background:**

HACL1 (2-hydroxyacyl-CoA lyase 1) is also known as HPCL or 2-HPCL (2-hydroxyphytanoyl-CoA lyase) and is a 578 amino acid, protein. HACL1 is abundantly expressed in liver, and is also expressed in kidney, heart and skeletal muscle, where it is localized to peroxisomes. HACL1 functions in lipid metabolism as well as fatty acid, metabolism and is able to form homotetramers.

**Gene ID:**

HACL1

**Uniprot**

Q9UJ83

**Synonyms:**

2-hydroxyacyl-CoA lyase 1

**Immunogen:**

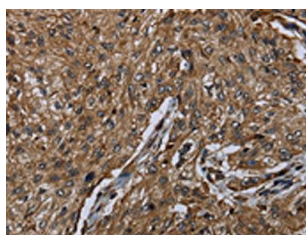
Fusion protein of human HACL1.

**Storage:**

-20&deg; C, pH7.4 PBS, 0.05% NaN<sub>3</sub>, 40% Glycerol

## Product Images

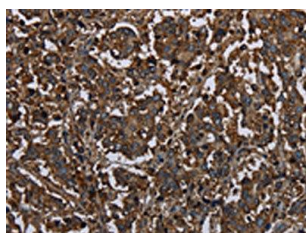
---



The image on the left is immunohistochemistry of paraffin-embedded Human esophagus cancer tissue using PACO16478(HA CL1 Antibody) at dilution 1/20, on the right is treated with fusion protein. (Original magnification: x—200).



Gel: 8%SDS-PAGE, Lysate: 40 &mu; g, Lane: Human testis tissue, Primary antibody: PACO16478(HA CL1 Antibody) at dilution 1/200, Secondary antibody: Goat anti rabbit IgG at 1/8000 dilution, Exposure time: 30 seconds.



The image on the left is immunohistochemistry of paraffin-embedded Human liver cancer tissue using PACO16478(HA CL1 Antibody) at dilution 1/20, on the right is treated with fusion protein. (Original magnification: x—200).