

FMNL1 Antibody



PACO16367

Product Information

Size:

50ul

Reactivity:

Human, Mouse

Source:

Rabbit

Isotype:

IgG

Applications:

ELISA, WB, IHC

Recommended dilutions:

ELISA:1:2000-1:5000, WB:1:500-1:2000,
IHC:1:20-1:100

Protein Background:

This gene encodes a formin-related protein. Formin-related proteins have been implicated in morphogenesis, cytokinesis, and cell polarity. An alternative splice variant has been described but its full length sequence has not been determined.

Gene ID:

FMNL1

Uniprot

O95466

Synonyms:

formin-like 1

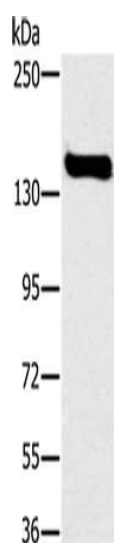
Immunogen:

Fusion protein of human FMNL1.

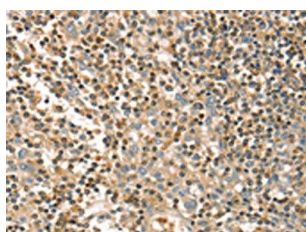
Storage:

-20°C; C, pH7.4 PBS, 0.05% NaN₃, 40% Glycerol

Product Images



Gel: 6%SDS-PAGE, Lysate: 40 μ g, Lane: A172 cells, Primary antibody: PACO16367(FMNL1 Antibody) at dilution 1/300, Secondary antibody: Goat anti rabbit IgG at 1/8000 dilution, Exposure time: 40 seconds.



The image on the left is immunohistochemistry of paraffin-embedded Human tonsil tissue using PACO16367(FMNL1 Antibody) at dilution 1/20, on the right is treated with fusion protein. (Original magnification: \times —200).