

Product Information

Size:

50ul

Reactivity:

Human, Mouse, Rat

Source:

Rabbit

Isotype:

IgG

Applications:

ELISA, WB

Recommended dilutions:

ELISA:1:2000-1:5000, WB:1:500-1:2000

Protein Background:

The balance between fission and fusion regulates the morphology of mitochondria. TTC11 is a component of a mitochondrial complex that promotes mitochondrial fission.

Gene ID:

FIS1

Uniprot

Q9Y3D6

Synonyms:

fission 1 (mitochondrial outer membrane) homolog (S. cerevisiae)

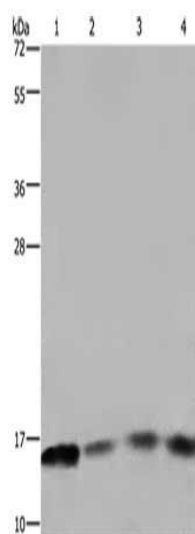
Immunogen:

Fusion protein of human FIS1.

Storage:

-20° C, pH7.4 PBS, 0.05% NaN₃, 40% Glycerol

Product Images



Gel: 10%SDS-PAGE, Lysate: 40 μ g, Lane 1-4: Raji cells, 293T cells, mouse spleen tissue, A431 cells, Primary antibody: PACO16361(FIS1 Antibody) at dilution 1/800, Secondary antibody: Goat anti rabbit IgG at 1/8000 dilution, Exposure time: 1 minute.