

FIS1 Antibody



PACO16360

Product Information

Size:

50ul

Reactivity:

Human, Mouse, Rat

Source:

Rabbit

Isotype:

IgG

Applications:

ELISA, WB, IHC

Recommended dilutions:

ELISA:1:2000-1:5000, WB:1:500-1:2000,
IHC:1:25-1:100

Protein Background:

The balance between fission and fusion regulates the morphology of mitochondria. TTC11 is a component of a mitochondrial complex that promotes mitochondrial fission.

Gene ID:

FIS1

Uniprot

Q9Y3D6

Synonyms:

fission 1 (mitochondrial outer membrane) homolog (S. cerevisiae)

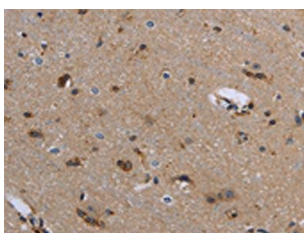
Immunogen:

Fusion protein of human FIS1.

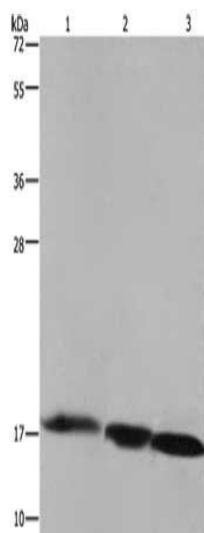
Storage:

-20° C, pH7.4 PBS, 0.05% NaN₃, 40% Glycerol

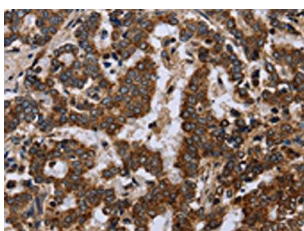
Product Images



The image on the left is immunohistochemistry of paraffin-embedded Human brain tissue using PACO16360(FIS1 Antibody) at dilution 1/20, on the right is treated with fusion protein. (Original magnification: x—200).



Gel: 10%SDS-PAGE, Lysate: 40 μ g, Lane 1-3: Raji cells, mouse liver tissue, Mouse heart tissue, Primary antibody: PACO16360(FIS1 Antibody) at dilution 1/500, Secondary antibody: Goat anti rabbit IgG at 1/8000 dilution, Exposure time: 1 minute.



The image on the left is immunohistochemistry of paraffin-embedded Human liver cancer tissue using PACO16360(FIS1 Antibody) at dilution 1/20, on the right is treated with fusion protein. (Original magnification: x—200).