

# FBP2 Antibody



PACO16328

---

## Product Information

**Size:**

50ul

**Reactivity:**

Human, Mouse, Rat

**Source:**

Rabbit

**Isotype:**

IgG

**Applications:**

ELISA, IHC

**Recommended dilutions:**

ELISA:1:2000-1:5000, IHC:1:50-1:200

**Protein Background:**

This gene encodes a gluconeogenesis regulatory enzyme which catalyzes the hydrolysis of fructose 1,6-bisphosphate to fructose 6-phosphate and inorganic phosphate.

**Gene ID:**

FBP2

**Uniprot**

O00757

**Synonyms:**

fructose-1,6-bisphosphatase 2

**Immunogen:**

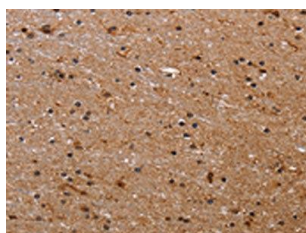
Fusion protein of human FBP2.

**Storage:**

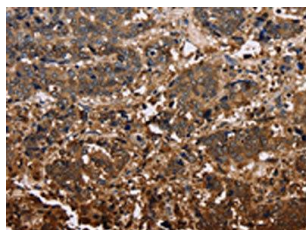
-20&deg; C, pH7.4 PBS, 0.05% NaN<sub>3</sub>, 40% Glycerol

## Product Images

---



The image on the left is immunohistochemistry of paraffin-embedded Human brain tissue using PACO16328(FBP2 Antibody) at dilution 1/40, on the right is treated with fusion protein. (Original magnification: x—200).



The image on the left is immunohistochemistry of paraffin-embedded Human liver cancer tissue using PACO16328(FBP2 Antibody) at dilution 1/40, on the right is treated with fusion protein. (Original magnification: x—200).