

Product Information

Size:

50ul

Reactivity:

Human, Mouse, Rat

Source:

Rabbit

Isotype:

IgG

Applications:

ELISA, IHC

Recommended dilutions:

ELISA:1:2000-1:5000, IHC:1:50-1:200

Protein Background:

DUSP26, also designated LDP4, MKP8, NATA1 and SKRP3, is ubiquitously expressed in brain except in the hippocampus. DUSP26 dephosphorylates p38 thereby inhibiting p38-mediated apoptosis in anaplastic thyroid cancer cells. Downregulation of DUSP26 may also contribute to malignant phenotypes of glioma.

Gene ID:

DUSP26

Uniprot

Q9BV47

Synonyms:

dual specificity phosphatase 26 (putative)

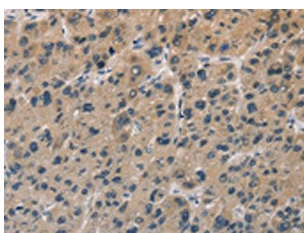
Immunogen:

Fusion protein of human DUSP26.

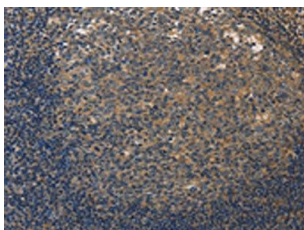
Storage:

-20° C, pH7.4 PBS, 0.05% NaN₃, 40% Glycerol

Product Images



The image on the left is immunohistochemistry of paraffin-embedded Human liver cancer tissue using PACO16211(DUSP26 Antibody) at dilution 1/50, on the right is treated with fusion protein. (Original magnification: x—200).



The image on the left is immunohistochemistry of paraffin-embedded Human tonsil tissue using PACO16211(DUSP26 Antibody) at dilution 1/50, on the right is treated with fusion protein. (Original magnification: x—200).