

DNASE1L3 Antibody



PACO16196

Product Information

Size:

50ul

Reactivity:

Human, Mouse, Rat

Source:

Rabbit

Isotype:

IgG

Applications:

ELISA, WB

Recommended dilutions:

ELISA:1:2000-1:5000, WB:1:500-1:2000

Protein Background:

This gene encodes a member of the deoxyribonuclease I family. The encoded protein hydrolyzes DNA, is not inhibited by actin, and mediates the breakdown of DNA during apoptosis. Mutations in this gene are a cause of systemic lupus erythematosus-16. Alternatively spliced transcript variants encoding multiple isoforms have been observed for this gene.

Gene ID:

DNASE1L3

Uniprot

Q13609

Synonyms:

deoxyribonuclease I-like 3

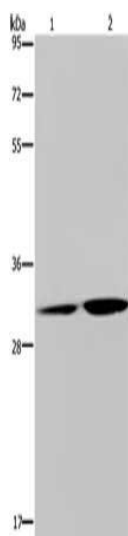
Immunogen:

Fusion protein of human DNASE1L3.

Storage:

-20° C, pH7.4 PBS, 0.05% NaN₃, 40% Glycerol

Product Images



Gel: 8%SDS-PAGE, Lysate: 40 μ g, Lane 1-2: HT29 cells, human placenta tissue, Primary antibody: PACO16196(DNASE1L3 Antibody) at dilution 1/450, Secondary antibody: Goat anti rabbit IgG at 1/8000 dilution, Exposure time: 30 seconds.