

PACO16081

Product Information

Size:

50ul

Reactivity:

Human, Mouse

Source:

Rabbit

Isotype:

IgG

Applications:

ELISA, WB, IHC

Recommended dilutions:

ELISA:1:1000-1:2000, WB:1:200-1:1000,
IHC:1:50-1:200

Protein Background:

The protein encoded by this gene is a tumor-associated antigen found in cutaneous T-cell lymphoma and several other cancers. Autoantibodies against the encoded protein have been found in some cancers. Several transcript variants encoding different isoforms have been found for this gene.

Gene ID:

CTAGE5

Uniprot

O15320

Synonyms:

CTAGE family, member 5

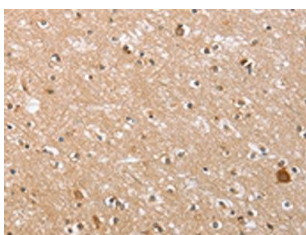
Immunogen:

Fusion protein of human CTAGE5.

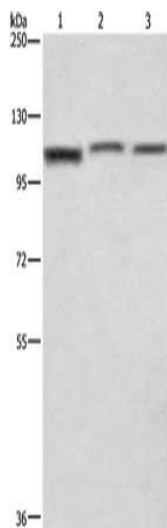
Storage:

-20° C, pH7.4 PBS, 0.05% NaN₃, 40% Glycerol

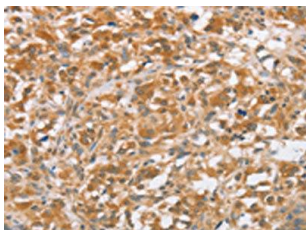
Product Images



The image on the left is immunohistochemistry of paraffin-embedded Human brain tissue using PACO16081(CTAGE5 Antibody) at dilution 1/40, on the right is treated with fusion protein. (Original magnification: x—200).



Gel: 10%SDS-PAGE, Lysate: 40 μ g, Lane 1-3: PC3 cells, human brain malignant glioma tissue, A172 cells, Primary antibody: PACO16081(CTAGE5 Antibody) at dilution 1/200, Secondary antibody: Goat anti rabbit IgG at 1/8000 dilution, Exposure time: 1 second.



The image on the left is immunohistochemistry of paraffin-embedded Human thyroid cancer tissue using PACO16081(CTAGE5 Antibody) at dilution 1/40, on the right is treated with fusion protein. (Original magnification: x—200).