

CLUAP1 Antibody



PACO16047

Product Information

Size:

50ul

Reactivity:

Human, Mouse, Rat

Source:

Rabbit

Isotype:

IgG

Applications:

ELISA, WB, IHC

Recommended dilutions:

ELISA:1:2000-1:5000, WB:1:500-1:2000,
IHC:1:100-1:300

Protein Background:

The protein encoded by this gene contains a single coiled-coil region. Alternative splicing results in multiple transcript variants and protein isoforms.

Gene ID:

CLUAP1

Uniprot

Q96AJ1

Synonyms:

clusterin associated protein 1

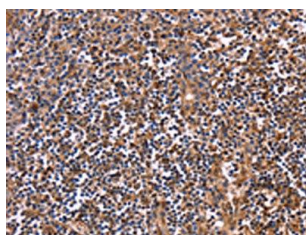
Immunogen:

Fusion protein of human CLUAP1.

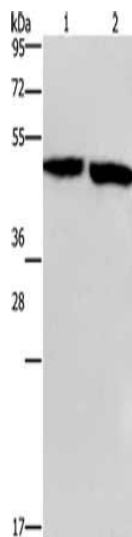
Storage:

-20°C; C, pH7.4 PBS, 0.05% NaN₃, 40% Glycerol

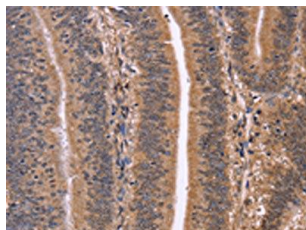
Product Images



The image on the left is immunohistochemistry of paraffin-embedded Human tonsil tissue using PACO16047(CLUAP1 Antibody) at dilution 1/50, on the right is treated with fusion protein. (Original magnification: x—200).



Gel: 8%SDS-PAGE, Lysate: 40 μ g, Lane 1-2: Mouse stomach tissue, Mouse brain tissue, Primary antibody: PACO16047(CLUAP1 Antibody) at dilution 1/500, Secondary antibody: Goat anti rabbit IgG at 1/8000 dilution, Exposure time: 1 minute.



The image on the left is immunohistochemistry of paraffin-embedded Human colon cancer tissue using PACO16047(CLUAP1 Antibody) at dilution 1/50, on the right is treated with fusion protein. (Original magnification: x—200).