

PLEKHO1 Antibody



PACO16038

Product Information

Size:

50ul

Reactivity:

Human, Mouse, Rat

Source:

Rabbit

Isotype:

IgG

Applications:

ELISA, WB, IHC

Recommended dilutions:

ELISA:1:1000-1:2000, WB:1:200-1:1000,
IHC:1:100-1:300

Protein Background:

Pleckstrin homology domain-containing family O member 1 is a protein that in humans is encoded by the PLEKHO1 gene. Plays a role in the regulation of the actin cytoskeleton through its interactions with actin capping protein (CP). May function to target CK2 to the plasma membrane thereby serving as an adapter to facilitate the phosphorylation of CP by protein kinase 2 (CK2). Appears to target ATM to the plasma membrane. Appears to also inhibit tumor cell growth by inhibiting AKT-mediated cell-survival.

Gene ID:

PLEKHO1

Uniprot

Q53GL0

Synonyms:

pleckstrin homology domain containing, family O member 1

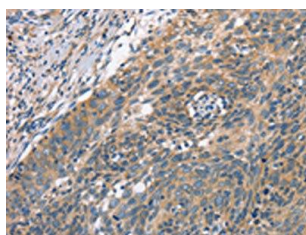
Immunogen:

Fusion protein of human PLEKHO1.

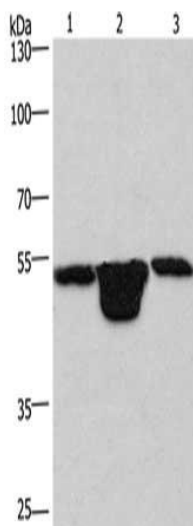
Storage:

-20°C; C, pH7.4 PBS, 0.05% NaN3, 40% Glycerol

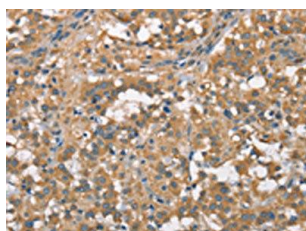
Product Images



The image on the left is immunohistochemistry of paraffin-embedded Human cervical cancer tissue using PACO16038(PLEKHO1 Antibody) at dilution 1/70, on the right is treated with fusion protein. (Original magnification: x—200).



Gel: 8%SDS-PAGE, Lysate: 40 μ g, Lane 1-3: Hela cells, mouse muscle tissue, Mouse kidney tissue, Primary antibody: PACO16038(PLEKHO1 Antibody) at dilution 1/200, Secondary antibody: Goat anti rabbit IgG at 1/8000 dilution, Exposure time: 1 minute.



The image on the left is immunohistochemistry of paraffin-embedded Human thyroid cancer tissue using PACO16038(PLEKHO1 Antibody) at dilution 1/70, on the right is treated with fusion protein. (Original magnification: x—200).