

PACO16013

---

## Product Information

**Size:**

50ul

**Reactivity:**

Human

**Source:**

Rabbit

**Isotype:**

IgG

**Applications:**

ELISA, IHC

**Recommended dilutions:**

ELISA:1:2000-1:5000, IHC:1:50-1:200

**Protein Background:**

Centromere protein C 1 is a centromere autoantigen and a component of the inner kinetochore plate. The protein is required for maintaining proper kinetochore size and a timely transition to anaphase. A putative pseudogene exists on chromosome 12. Component of the CENPA-NAC (nucleosome-associated) complex, a complex that plays a central role in assembly of kinetochore proteins, mitotic progression and chromosome segregation. The CENPA-NAC complex recruits the CENPA-CAD (nucleosome distal) complex and may be involved in incorporation of newly synthesized CENPA into centromeres.

**Gene ID:**

CENPC

**Uniprot**

Q03188

**Synonyms:**

centromere protein C

**Immunogen:**

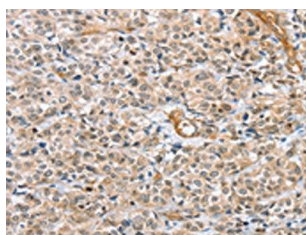
Fusion protein of human CENPC.

**Storage:**

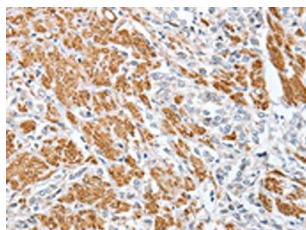
-20&deg; C, pH7.4 PBS, 0.05% NaN3, 40% Glycerol

## Product Images

---



The image on the left is immunohistochemistry of paraffin-embedded Human esophagus cancer tissue using PACO16013(CENPC Antibody) at dilution 1/70, on the right is treated with fusion protein. (Original magnification: x—200).



The image on the left is immunohistochemistry of paraffin-embedded Human prostate cancer tissue using PACO16013(CENPC Antibody) at dilution 1/70, on the right is treated with fusion protein. (Original magnification: x—200).