

PACO15940

Product Information

Size:

50ul

Reactivity:

Human

Source:

Rabbit

Isotype:

IgG

Applications:

ELISA, IHC

Recommended dilutions:

ELISA:1:2000-1:10000, IHC:1:100-1:300

Protein Background:

CatSper3, is a protein which in humans is encoded by the CATSPER3 gene. CatSper3 is a member of the cation channels of sperm family of proteins. The four proteins in this family together form a Ca²⁺-permeant ion channel specific essential for the correct function of sperm cells. Voltage-gated calcium channel that plays a central role in calcium-dependent physiological responses essential for successful fertilization, such as sperm hyperactivation, acrosome reaction and chemotaxis towards the oocyte.

Gene ID:

CATSPER3

Uniprot

Q86XQ3

Synonyms:

cation channel, sperm associated 3

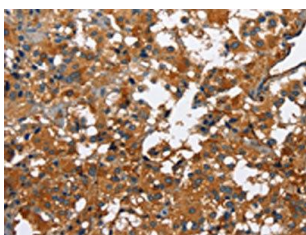
Immunogen:

Fusion protein of human CATSPER3.

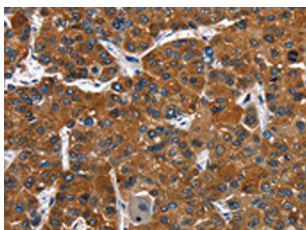
Storage:

-20°C; C, pH7.4 PBS, 0.05% NaN₃, 40% Glycerol

Product Images



The image on the left is immunohistochemistry of paraffin-embedded Human thyroid cancer tissue using PACO15940(CATSPER3 Antibody) at dilution 1/60, on the right is treated with fusion protein. (Original magnification: x—200).



The image on the left is immunohistochemistry of paraffin-embedded Human liver cancer tissue using PACO15940(CATSPER3 Antibody) at dilution 1/60, on the right is treated with fusion protein. (Original magnification: x—200).