

PACO15921

Product Information

Size:

50ul

Reactivity:

Human

Source:

Rabbit

Isotype:

IgG

Applications:

ELISA, IHC

Recommended dilutions:

ELISA:1:2000-1:5000, IHC:1:50-1:200

Protein Background:

Condensin complexes I and II play essential roles in mitotic chromosome assembly and segregation. Both condensins contain 2 invariant structural maintenance of chromosome (SMC) subunits, SMC2 and SMC4, but they contain different sets of non-SMC subunits. NCAPD3 is 1 of 3 non-SMC subunits that define condensin II.

Gene ID:

NCAPD3

Uniprot

P42695

Synonyms:

non-SMC condensin II complex, subunit D3

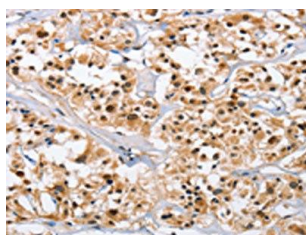
Immunogen:

Fusion protein of human NCAPD3.

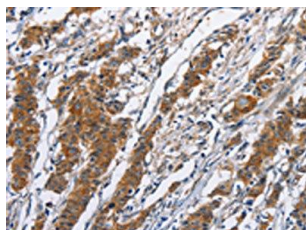
Storage:

-20° C, pH7.4 PBS, 0.05% NaN₃, 40% Glycerol

Product Images



The image on the left is immunohistochemistry of paraffin-embedded Human thyroid cancer tissue using PACO15921 (NCAPD3 Antibody) at dilution 1/50, on the right is treated with fusion protein. (Original magnification: x—200).



The image on the left is immunohistochemistry of paraffin-embedded Human gastric cancer tissue using PACO15921 (NCAPD3 Antibody) at dilution 1/50, on the right is treated with fusion protein. (Original magnification: x—200).