

PACO15920

---

## Product Information

**Size:**

50ul

**Reactivity:**

Human, Mouse

**Source:**

Rabbit

**Isotype:**

IgG

**Applications:**

ELISA, WB, IHC

**Recommended dilutions:**

ELISA:1:2000-1:5000, WB:1:500-1:2000,  
IHC:1:25-1:100

**Protein Background:**

Condensin complex subunit 1 also known as chromosome-associated protein D2 (CAP-D2) or non-SMC condensin I complex subunit D2 (NCAPD2) or XCAP-D2 homolog is a protein that in humans is encoded by the NCAPD2 gene. CAP-D2 is a subunit of condensin I, a large protein complex involved in chromosome condensation.

**Gene ID:**

NCAPD2

**Uniprot**

Q15021

**Synonyms:**

non-SMC condensin I complex, subunit D2

**Immunogen:**

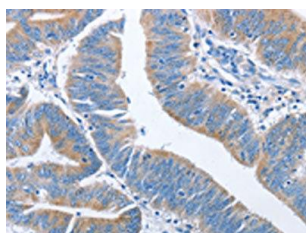
Fusion protein of human NCAPD2.

**Storage:**

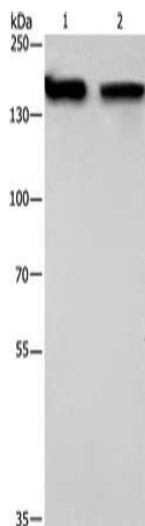
-20°C; C, pH7.4 PBS, 0.05% NaN<sub>3</sub>, 40% Glycerol

## Product Images

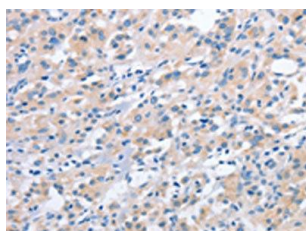
---



The image on the left is immunohistochemistry of paraffin-embedded Human colon cancer tissue using PACO15920(NCAPD2 Antibody) at dilution 1/40, on the right is treated with fusion protein. (Original magnification: x—200).



Gel: 6%SDS-PAGE, Lysate: 40 &mu; g, Lane 1-2: 293T cells, hela cells, Primary antibody: PACO15920(NCAPD2 Antibody) at dilution 1/425, Secondary antibody: Goat anti rabbit IgG at 1/8000 dilution, Exposure time: 20 seconds.



The image on the left is immunohistochemistry of paraffin-embedded Human thyroid cancer tissue using PACO15920(NCAPD2 Antibody) at dilution 1/40, on the right is treated with fusion protein. (Original magnification: x—200).