

PACO15909

Product Information

Size:

50ul

Reactivity:

Human

Source:

Rabbit

Isotype:

IgG

Applications:

ELISA, WB, IHC

Recommended dilutions:

ELISA:1:2000-1:5000, WB:1:500-1:2000,
IHC:1:100-1:300

Protein Background:

The protein encoded by this gene is an endogenous calpain (calcium-dependent cysteine protease) inhibitor. It consists of an N-terminal domain L and four repetitive calpain-inhibition domains (domains 1-4), and it is involved in the proteolysis of amyloid precursor protein. The calpain/calpastatin system is involved in numerous membrane fusion events, such as neural vesicle exocytosis and platelet and red-cell aggregation. The encoded protein is also thought to affect the expression levels of genes encoding structural or regulatory proteins. Alternatively spliced transcript variants encoding different isoforms have been described.

Gene ID:

CAST

Uniprot

P20810

Synonyms:

calpastatin

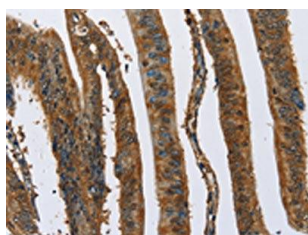
Immunogen:

Fusion protein of human CAST.

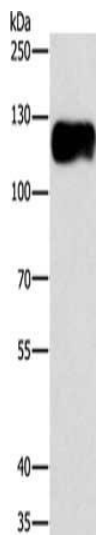
Storage:

-20° C, pH7.4 PBS, 0.05% NaN3, 40% Glycerol

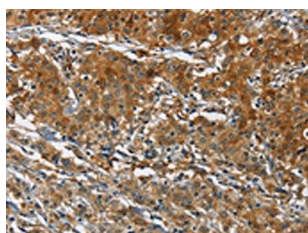
Product Images



The image on the left is immunohistochemistry of paraffin-embedded Human colon cancer tissue using PACO15909(CAST Antibody) at dilution 1/70, on the right is treated with fusion protein. (Original magnification: x—200).



Gel: 8%SDS-PAGE, Lysate: 40 μ g, Lane: Lovo cells, Primary antibody: PACO15909(CAST Antibody) at dilution 1/750, Secondary antibody: Goat anti rabbit IgG at 1/8000 dilution, Exposure time: 7 seconds.



The image on the left is immunohistochemistry of paraffin-embedded Human gastric cancer tissue using PACO15909(CAST Antibody) at dilution 1/70, on the right is treated with fusion protein. (Original magnification: x—200).