

BTN2A2 Antibody



PACO15893

Product Information

Size:

50ul

Reactivity:

Human

Source:

Rabbit

Isotype:

IgG

Applications:

ELISA, IHC

Recommended dilutions:

ELISA:1:2000-1:5000, IHC:1:25-1:100

Protein Background:

Butyrophilin is the major protein associated with fat droplets in the milk. This gene is a member of the BTN2 subfamily of genes, which encode proteins belonging to the butyrophilin protein family. The gene is located in a cluster on chromosome 6, consisting of seven genes belonging to the expanding B7/butyrophilin-like group, a subset of the immunoglobulin gene superfamily. The encoded protein is a type I receptor glycoprotein involved in lipid, fatty-acid, and sterol metabolism. Several alternatively spliced transcript variants encoding different isoforms have been found for this gene.

Gene ID:

BTN2A2

Uniprot

Q8WVV5

Synonyms:

butyrophilin, subfamily 2, member A2

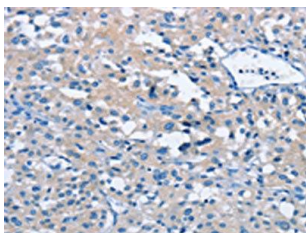
Immunogen:

Fusion protein of human BTN2A2.

Storage:

-20°C, pH7.4 PBS, 0.05% NaN3, 40% Glycerol

Product Images



The image on the left is immunohistochemistry of paraffin-embedded Human thyroid cancer tissue using PACO15893(BTN2A2 Antibody) at dilution 1/40, on the right is treated with fusion protein. (Original magnification: x—200).