

PACO15807

Product Information

Size:

50ul

Reactivity:

Human, Mouse

Source:

Rabbit

Isotype:

IgG

Applications:

ELISA, WB, IHC

Recommended dilutions:

ELISA:1:1000-1:5000, WB:1:500-1:2000,
IHC:1:50-1:200

Protein Background:

This gene encodes a key acute phase plasma protein. Because of its increase due to acute inflammation, this protein is classified as an acute-phase reactant. The specific function of this protein has not yet been determined; however, it may be involved in aspects of immunosuppression.

Gene ID:

ORM2

Uniprot

P19652

Synonyms:

orosomuroid 2

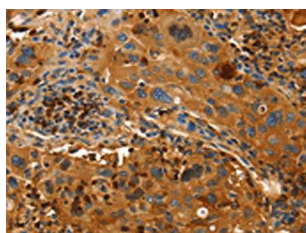
Immunogen:

Fusion protein of human ORM2.

Storage:

-20° C, pH7.4 PBS, 0.05% NaN₃, 40% Glycerol

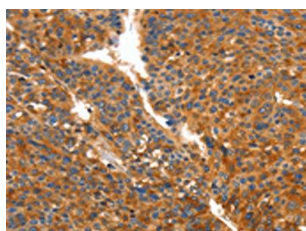
Product Images



The image on the left is immunohistochemistry of paraffin-embedded Human lung cancer tissue using PACO15807(ORM2 Antibody) at dilution 1/50, on the right is treated with fusion protein. (Original magnification: x—200).



Gel: 10%SDS-PAGE, Lysate: 40 μ g, Lane: Mouse liver tissue, Primary antibody: PACO15807(ORM2 Antibody) at dilution 1/700, Secondary antibody: Goat anti rabbit IgG at 1/8000 dilution, Exposure time: 10 seconds.



The image on the left is immunohistochemistry of paraffin-embedded Human liver cancer tissue using PACO15807(ORM2 Antibody) at dilution 1/50, on the right is treated with fusion protein. (Original magnification: x—200).