

PACO15790

Product Information

Size:

50ul

Reactivity:

Human, Mouse

Source:

Rabbit

Isotype:

IgG

Applications:

ELISA, IHC

Recommended dilutions:

ELISA:1:1000-1:5000, IHC:1:50-1:200

Protein Background:

The human ASH2L gene encodes a 628 amino acid, protein known as ASH2L1, or isoform 1, which contains a nuclear localization signal and PHD finger motif, suggesting that the gene product functions as a transcription regulator. Alternative splicing results in a shorter isoform 2, designated ASH2L2, which is missing the first 94 amino acid, residues found in ASH2L1. Human ASH2L proteins are 60% homologous to *Drosophila* ash2, which positively regulates expression of certain genes in early development, and contain similar, but not identical, domains, including a zinc finger motif. ASH2L is highly expressed in fetal liver, testis and leukemia cell lines with erythroid and megakaryocytic potential, such as K562, Hel and Dami.

Gene ID:

ASH2L

Uniprot

Q9UBL3

Synonyms:

ash2 (absent, small, or homeotic)-like (*Drosophila*)

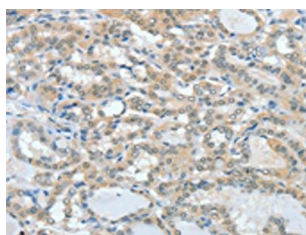
Immunogen:

Fusion protein of human ASH2L.

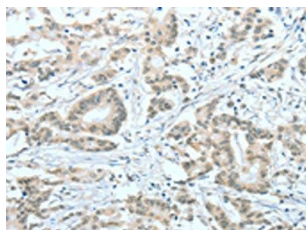
Storage:

-20° C, pH7.4 PBS, 0.05% NaN₃, 40% Glycerol

Product Images



The image on the left is immunohistochemistry of paraffin-embedded Human thyroid cancer tissue using PACO15790(ASH2L Antibody) at dilution 1/60, on the right is treated with fusion protein. (Original magnification: x—200).



The image on the left is immunohistochemistry of paraffin-embedded Human colon cancer tissue using PACO15790(ASH2L Antibody) at dilution 1/60, on the right is treated with fusion protein. (Original magnification: x—200).