
Product Information

Size:

50ul

Reactivity:

Human, Mouse

Source:

Rabbit

Isotype:

IgG

Applications:

ELISA, IHC

Recommended dilutions:

ELISA:1:1000-1:5000, IHC:1:50-1:200

Protein Background:

This gene encodes a member of the myotubularin family of tyrosine/dual-specificity phosphatases. The encoded protein is characterized by four distinct domains that are conserved among all members of the myotubularin family: the glucosyltransferase, Rab-like GTPase activator and myotubularins domain, the Rac-induced recruitment domain, the protein tyrosine phosphatases and dual-specificity phosphatases domain and the suppressor of variegation 3-9, enhancer-of-zeste, and trithorax interaction domain. This protein dephosphorylates the target substrates phosphatidylinositol 3-phosphate and inositol 1,3-bisphosphate. A pseudogene of this gene is found on chromosome 5.

Gene ID:

MTMR7

Uniprot

Q9Y216

Synonyms:

myotubularin related protein 7

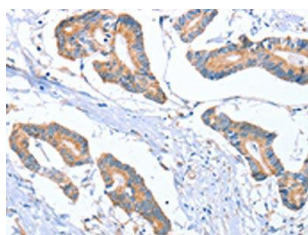
Immunogen:

Fusion protein of human MTMR7.

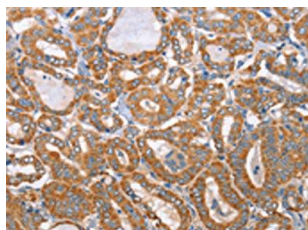
Storage:

-20° C, pH7.4 PBS, 0.05% NaN3, 40% Glycerol

Product Images



The image on the left is immunohistochemistry of paraffin-embedded Human colon cancer tissue using PACO15633(MTMR7 Antibody) at dilution 1/40, on the right is treated with fusion protein. (Original magnification: x—200).



The image on the left is immunohistochemistry of paraffin-embedded Human thyroid cancer tissue using PACO15633(MTMR7 Antibody) at dilution 1/40, on the right is treated with fusion protein. (Original magnification: x—200).