

Product Information

Size:

50ul

Reactivity:

Human

Source:

Rabbit

Isotype:

IgG

Applications:

ELISA, IHC

Recommended dilutions:

ELISA:1:1000-1:5000, IHC:1:50-1:200

Protein Background:

This gene encodes an arginine-specific ADP-ribosyltransferase. The encoded protein catalyzes a reversible reaction which modifies proteins by the addition or removal of ADP-ribose to an arginine residue to regulate the function of the modified protein. An ADP-ribosyltransferase pseudogene is located on chromosome 11. Multiple transcript variants encoding different isoforms have been found for this gene.

Gene ID:

ART3

Uniprot

Q13508

Synonyms:

ADP-ribosyltransferase 3

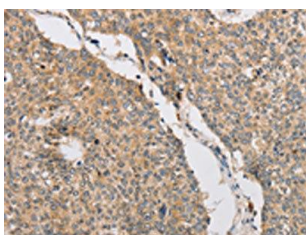
Immunogen:

Fusion protein of human ART3.

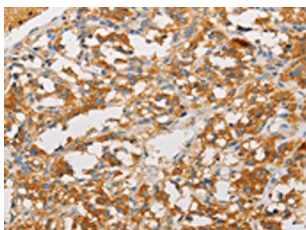
Storage:

-20° C, pH7.4 PBS, 0.05% NaN₃, 40% Glycerol

Product Images



The image on the left is immunohistochemistry of paraffin-embedded Human lung cancer tissue using PACO15565(ART3 Antibody) at dilution 1/40, on the right is treated with fusion protein. (Original magnification: x—200).



The image on the left is immunohistochemistry of paraffin-embedded Human thyroid cancer tissue using PACO15565(ART3 Antibody) at dilution 1/40, on the right is treated with fusion protein. (Original magnification: x—200).