

PACO15527

Product Information

Size:

50ul

Reactivity:

Human, Mouse

Source:

Rabbit

Isotype:

IgG

Applications:

ELISA, IHC

Recommended dilutions:

ELISA:1:2000-1:5000, IHC:1:25-1:100

Protein Background:

ARL8A (ADP-ribosylation factor-like protein 8A), also known as ARL10B or GIE2, is a 186 amino acid, protein that localizes to the membrane of late endosomes. Expressed ubiquitously, ARL8A is thought to play a role in lysosomal motility and may also be involved in chromosomal segregation events. The gene encoding ARL8A maps to human chromosome 1, which spans 260 million base pairs, houses over 3,000 genes and comprises nearly 8% of the human genome.

Gene ID:

ARL8A

Uniprot

Q96BM9

Synonyms:

ADP-ribosylation factor-like 8A

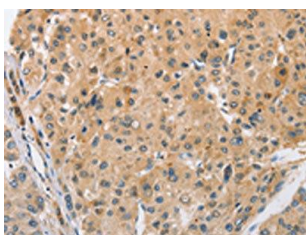
Immunogen:

Fusion protein of human ARL8A.

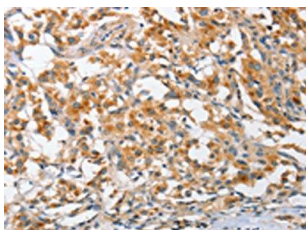
Storage:

-20° C, pH7.4 PBS, 0.05% NaN₃, 40% Glycerol

Product Images



The image on the left is immunohistochemistry of paraffin-embedded Human liver cancer tissue using PACO15527(ARL8A Antibody) at dilution 1/25, on the right is treated with fusion protein. (Original magnification: x—200).



The image on the left is immunohistochemistry of paraffin-embedded Human thyroid cancer tissue using PACO15527(ARL8A Antibody) at dilution 1/25, on the right is treated with fusion protein. (Original magnification: x—200).