

# ALS2CR11 Antibody



PACO15415

---

## Product Information

**Size:**

50ul

**Reactivity:**

Human

**Source:**

Rabbit

**Isotype:**

IgG

**Applications:**

ELISA, IHC

**Recommended dilutions:**

ELISA:1:2000-1:5000, IHC:1:25-1:100

**Protein Background:**

This gene has highly expression in digestive system component and liver, biliary system. It may have four isoforms that produced by alternative splicing. Transcription profiling of human mesenchymal stem cells transformed with lentiviral vectors of TERT, E6, SV40 and RAS.

**Gene ID:**

C2CD6

**Uniprot**

Q53TS8

**Synonyms:**

amyotrophic lateral sclerosis 2 (juvenile) chromosome region, candidate 11

**Immunogen:**

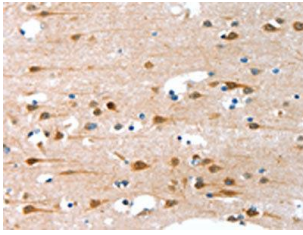
Fusion protein of human ALS2CR11.

**Storage:**

-20&deg; C, pH7.4 PBS, 0.05% NaN<sub>3</sub>, 40% Glycerol

## Product Images

---



The image on the left is immunohistochemistry of paraffin-embedded Human brain tissue using PACO15415(ALS2CR11 Antibody) at dilution 1/30, on the right is treated with fusion protein. (Original magnification: x—200).