

ALS2CR11 Antibody



PACO15414

Product Information

Size:

50ul

Reactivity:

Human, Mouse

Source:

Rabbit

Isotype:

IgG

Applications:

ELISA, WB

Recommended dilutions:

ELISA:1:1000-1:2000, WB:1:200-1:1000

Protein Background:

This gene has highly expression in digestive system component and liver, biliary system. It may have four isoforms that produced by alternative splicing. Transcription profiling of human mesenchymal stem cells transformed with lentiviral vectors of TERT, E6, SV40 and RAS.

Gene ID:

C2CD6

Uniprot

Q53TS8

Synonyms:

amyotrophic lateral sclerosis 2 (juvenile) chromosome region, candidate 11

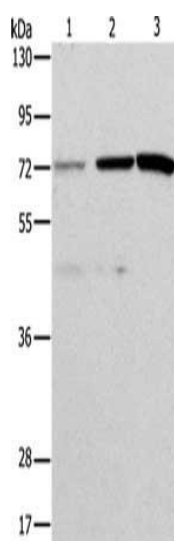
Immunogen:

Fusion protein of human ALS2CR11.

Storage:

-20° C, pH7.4 PBS, 0.05% NaN₃, 40% Glycerol

Product Images



Gel: 10%SDS-PAGE, Lysate: 40 μ g, Lane 1-3: HeLa cells, SKOV3 cells, mouse liver tissue, Primary antibody: PACO15414(ALS2CR11 Antibody) at dilution 1/500, Secondary antibody: Goat anti rabbit IgG at 1/8000 dilution, Exposure time: 5 minutes.