

PACO15386

Product Information

Size:

50ul

Reactivity:

Human, Mouse

Source:

Rabbit

Isotype:

IgG

Applications:

ELISA, IHC

Recommended dilutions:

ELISA:1:2000-1:5000, IHC:1:25-1:100

Protein Background:

This gene encodes a member of the ALG6/ALG8 glucosyltransferase family. The encoded protein catalyzes the addition of the second glucose residue to the lipid-linked oligosaccharide precursor for N-linked glycosylation of proteins. Mutations in this gene have been associated with congenital disorder of glycosylation type 1h (CDG-1h). Alternatively spliced transcript variants encoding different isoforms have been identified.

Gene ID:

ALG8

Uniprot

Q9BVK2

Synonyms:

ALG8, alpha-1,3-glucosyltransferase

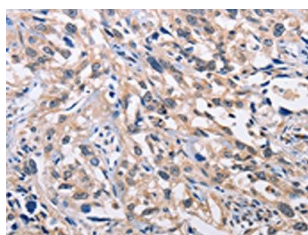
Immunogen:

Fusion protein of human ALG8.

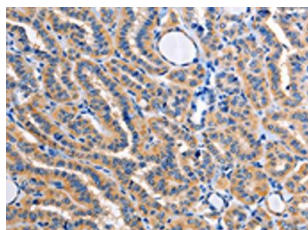
Storage:

-20°C; C, pH7.4 PBS, 0.05% NaN₃, 40% Glycerol

Product Images



The image on the left is immunohistochemistry of paraffin-embedded Human esophagus cancer tissue using PACO15386(ALG8 Antibody) at dilution 1/30, on the right is treated with fusion protein. (Original magnification: x—200).



The image on the left is immunohistochemistry of paraffin-embedded Human thyroid cancer tissue using PACO15386(ALG8 Antibody) at dilution 1/30, on the right is treated with fusion protein. (Original magnification: x—200).