

ALDH8A1 Antibody



PACO15383

Product Information

Size:

50ul

Reactivity:

Human, Mouse

Source:

Rabbit

Isotype:

IgG

Applications:

ELISA, WB, IHC

Recommended dilutions:

ELISA:1:2000-1:10000, WB:1:1000-1:5000,
IHC:1:50-1:200

Protein Background:

This protein belongs to the aldehyde dehydrogenases family of proteins. It plays a role in a pathway of 9-cis-retinoic acid, biosynthesis in vivo. This enzyme converts 9-cis-retinal into the retinoid X receptor ligand 9-cis-retinoic acid, and has approximately 40-fold higher activity with 9-cis-retinal than with all-trans-retinal. Therefore, it is the first known aldehyde dehydrogenase to show a preference for 9-cis-retinal relative to all-trans-retinal. Three transcript variants encoding distinct protein isoforms have been identified for this gene.

Gene ID:

ALDH8A1

Uniprot

Q9H2A2

Synonyms:

aldehyde dehydrogenase 8 family, member A1

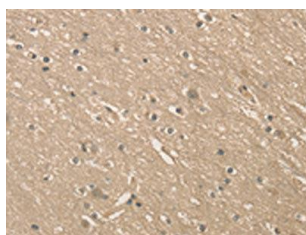
Immunogen:

Fusion protein of human ALDH8A1.

Storage:

-20°C, pH7.4 PBS, 0.05% NaN₃, 40% Glycerol

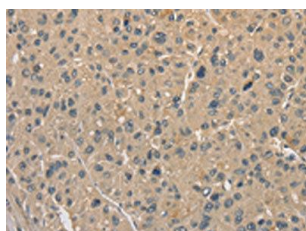
Product Images



The image on the left is immunohistochemistry of paraffin-embedded Human brain tissue using PACO15383(ALDH8A1 Antibody) at dilution 1/40, on the right is treated with fusion protein. (Original magnification: x—200).



Gel: 8%SDS-PAGE, Lysate: 40 μ g, Lane 1-2: Mouse liver tissue, Mouse kidney tissue, Primary antibody: PACO15383(ALDH8A1 Antibody) at dilution 1/800, Secondary antibody: Goat anti rabbit IgG at 1/8000 dilution, Exposure time: 3 seconds.



The image on the left is immunohistochemistry of paraffin-embedded Human liver cancer tissue using PACO15383(ALDH8A1 Antibody) at dilution 1/40, on the right is treated with fusion protein. (Original magnification: x—200).