

PACO15358

---

## Product Information

**Size:**

50ul

**Reactivity:**

Human, Mouse

**Source:**

Rabbit

**Isotype:**

IgG

**Applications:**

ELISA, WB, IHC

**Recommended dilutions:**

ELISA:1:2000-1:5000, WB:1:200-1:1000,  
IHC:1:25-1:100

**Protein Background:**

A-kinase anchor protein 8-like is an enzyme that in humans is encoded by the AKAP8L gene. Could play a role in constitutive transport element (CTE)-mediated gene expression. Does not seem to be implicated in the binding of regulatory subunit II of PKA. May be involved in nuclear envelope breakdown and chromatin condensation. May regulate the initiation phase of DNA replication when associated with TMPO-beta.

**Gene ID:**

AKAP8L

**Uniprot**

Q9ULX6

**Synonyms:**

A kinase (PRKA) anchor protein 8-like

**Immunogen:**

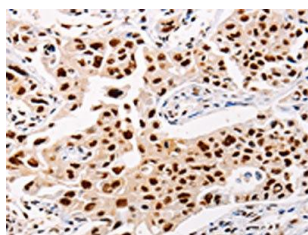
Fusion protein of human AKAP8L.

**Storage:**

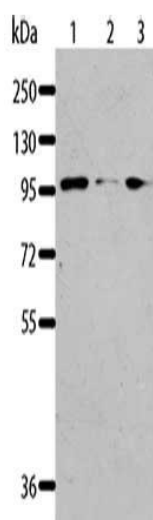
-20&deg; C, pH7.4 PBS, 0.05% NaN3, 40% Glycerol

## Product Images

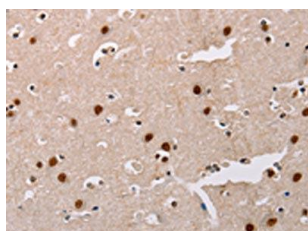
---



The image on the left is immunohistochemistry of paraffin-embedded Human lung cancer tissue using PACO15358(AKAP8L Antibody) at dilution 1/20, on the right is treated with fusion protein. (Original magnification: x—200).



Gel: 8%SDS-PAGE, Lysate: 40 &mu; g, Lane 1-3: Jurkat cells, 293T cells, K562 cells, Primary antibody: PACO15358(AKAP8L Antibody) at dilution 1/117, Secondary antibody: Goat anti rabbit IgG at 1/8000 dilution, Exposure time: 30 seconds.



The image on the left is immunohistochemistry of paraffin-embedded Human brain tissue using PACO15358(AKAP8L Antibody) at dilution 1/20, on the right is treated with fusion protein. (Original magnification: x—200).