

PACO15342

---

## Product Information

**Size:**

50ul

**Reactivity:**

Human

**Source:**

Rabbit

**Isotype:**

IgG

**Applications:**

ELISA, WB, IHC

**Recommended dilutions:**

ELISA:1:1000-1:2000, WB:1:200-1:1000,  
IHC:1:25-1:100

**Protein Background:**

AGBL2 is a 902 amino acid, cytoplasmic protein belonging to the peptidase M14 family. CCP2 is considered a metallocooxypeptidase that may play a role in the processing of tubulin. CCP2 binds one zinc ion per subunit as a cofactor and exists as three alternatively spliced isoforms.

**Gene ID:**

AGBL2

**Uniprot**

Q5U5Z8

**Synonyms:**

ATP/GTP binding protein-like 2

**Immunogen:**

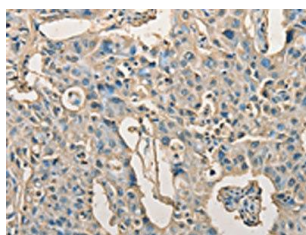
Fusion protein of human AGBL2.

**Storage:**

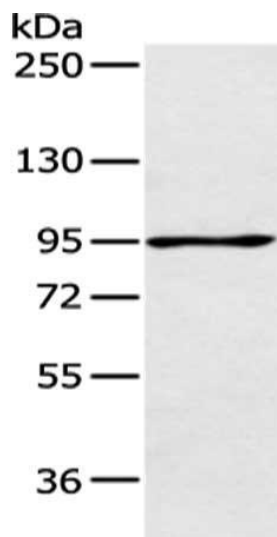
-20&deg; C, pH7.4 PBS, 0.05% NaN3, 40% Glycerol

## Product Images

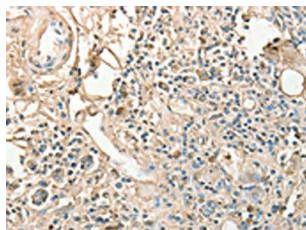
---



The image on the left is immunohistochemistry of paraffin-embedded Human lung cancer tissue using PACO15342(AGBL2 Antibody) at dilution 1/25, on the right is treated with fusion protein. (Original magnification: x—200).



Gel: 6%SDS-PAGE, Lysate: 40 &mu; g, Lane: 293T cell, Primary antibody: PACO15342(AGBL2 Antibody) at dilution 1/200 dilution, Secondary antibody: Goat anti rabbit IgG at 1/8000 dilution, Exposure time: 1 minute.



The image on the left is immunohistochemistry of paraffin-embedded Human gastric cancer tissue using PACO15342(AGBL2 Antibody) at dilution 1/25, on the right is treated with fusion protein. (Original magnification: x—200).