

## Product Information

**Size:**

50ul

**Reactivity:**

Human

**Source:**

Rabbit

**Isotype:**

IgG

**Applications:**

ELISA, WB

**Recommended dilutions:**

ELISA:1:2000-1:5000, WB:1:500-1:2000

**Protein Background:**

The piggyBac family of proteins, found in diverse animals, are transposases related to the transposase of the canonical piggyBac transposon from the moth, *Trichoplusia ni*. This family also includes genes in several genomes, including human, that appear to have been derived from the piggyBac transposons. This gene belongs to the subfamily of piggyBac transposable element derived (PGBD) genes. The PGBD proteins appear to be novel, with no obvious relationship to other transposases, or other known protein families. The exact function of this gene is not known. Two transcript variants encoding different isoforms have been found for this gene.

**Gene ID:**

PGBD2

**Uniprot**

Q6P3X8

**Synonyms:**

PiggyBac transposable element derived 2

**Immunogen:**

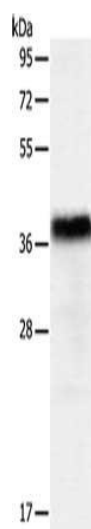
Fusion protein of human PGBD2.

**Storage:**

-20&deg; C, pH7.4 PBS, 0.05% NaN3, 40% Glycerol

## Product Images

---



Gel: 10%SDS-PAGE, Lysate: 40  $\mu$ g, Lane: Human liver cancer tissue, Primary antibody: PACO15204(PGBD2 Antibody) at dilution 1/550, Secondary antibody: Goat anti rabbit IgG at 1/8000 dilution, Exposure time: 10 seconds.