

### Product Information

**Size:**

50ul

**Reactivity:**

Human, Mouse

**Source:**

Rabbit

**Isotype:**

IgG

**Applications:**

ELISA, WB, IHC

**Recommended dilutions:**

ELISA:1:1000-1:2000, WB:1:200-1:1000,  
IHC:1:15-1:50

**Protein Background:**

This gene encodes a testis-specific protein that belongs to the tetratricopeptide repeat-like superfamily. The encoded protein localizes to the Golgi apparatus and may play a role in spermatogenesis. The SPATA16 protein contains a region of homology to the mouse male enhanced antigen-2, a SCOP domain belonging to the tetratricopeptide repeat-like superfamily, 3 glycosylation sites, and several phosphorylation sites. The mouse and human proteins share 77% sequence identity. Northern blot analysis of multiple human tissues detected a strong signal in testis and weak expression in pancreas and kidney. Laser confocal microscopy localized a GFP-SPATA16 fusion protein specifically to the Golgi apparatus.

**Gene ID:**

SPATA16

**Uniprot**

Q9BXB7

**Synonyms:**

Spermatogenesis associated 16

**Immunogen:**

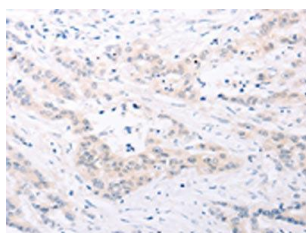
Fusion protein of human SPATA16.

**Storage:**

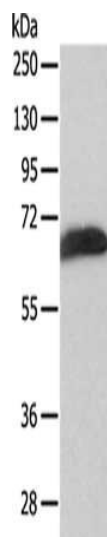
-20&deg; C, pH7.4 PBS, 0.05% NaN3, 40% Glycerol

## Product Images

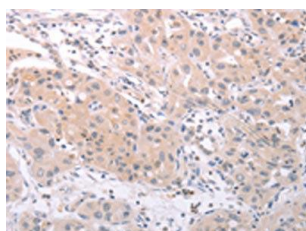
---



The image on the left is immunohistochemistry of paraffin-embedded Human colon cancer tissue using PACO15162(SPATA16 Antibody) at dilution 1/25, on the right is treated with fusion protein. (Original magnification: x—200).



Gel: 12%SDS-PAGE, Lysate: 50 μg, Lane: Human liver cancer tissue, Primary antibody: PACO15162(SPATA16 Antibody) at dilution 1/200, Secondary antibody: Goat anti rabbit IgG at 1/8000 dilution, Exposure time: 40 seconds.



The image on the left is immunohistochemistry of paraffin-embedded Human lung cancer tissue using PACO15162(SPATA16 Antibody) at dilution 1/25, on the right is treated with fusion protein. (Original magnification: x—200).