

PACO15161

---

## Product Information

**Size:**

50ul

**Reactivity:**

Human, Mouse, Rat

**Source:**

Rabbit

**Isotype:**

IgG

**Applications:**

ELISA, WB, IHC

**Recommended dilutions:**

ELISA:1:1000-1:2000, WB:1:200-1:1000,  
IHC:1:25-1:100

**Protein Background:**

SPATA6 (spermatogenesis associated 6), also known as SRF1, is a 488 amino acid, secreted protein that may be involved in spermatid maturation or sperm function. SPATA6 is expressed during embryonic development and is localized in neural tube, somites and limb buds of mouse embryo. Existing as two isoforms produced by alternative splicing events, the gene encoding SPATA6 maps to mouse chromosome 4 and human chromosome 1.

**Gene ID:**

SPATA6

**Uniprot**

Q9NWH7

**Synonyms:**

spermatogenesis associated 6

**Immunogen:**

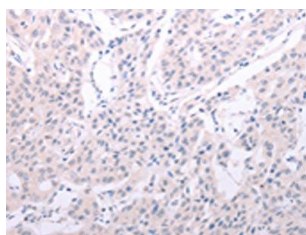
Fusion protein of human SPATA6.

**Storage:**

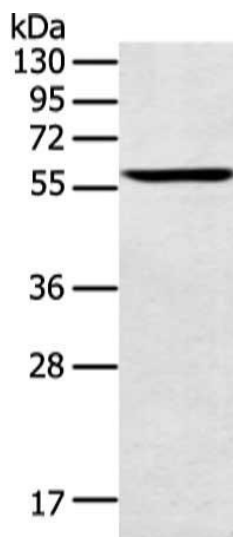
-20&deg; C, pH7.4 PBS, 0.05% NaN<sub>3</sub>, 40% Glycerol

## Product Images

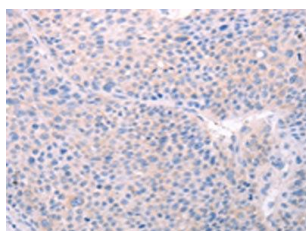
---



The image on the left is immunohistochemistry of paraffin-embedded Human lung cancer tissue using PACO15161(SPATA6 Antibody) at dilution 1/40, on the right is treated with fusion protein. (Original magnification: x—200).



Gel: 8%SDS-PAGE, Lysate: 40 &mu; g, Lane: Human lung cancer tissue, Primary antibody: PACO15161(SPATA6 Antibody) at dilution 1/200 dilution, Secondary antibody: Goat anti rabbit IgG at 1/8000 dilution, Exposure time: 10 seconds.



The image on the left is immunohistochemistry of paraffin-embedded Human liver cancer tissue using PACO15161(SPATA6 Antibody) at dilution 1/40, on the right is treated with fusion protein. (Original magnification: x—200).