

SPATA6 Antibody



PACO15160

Product Information

Size:

50ul

Reactivity:

Human, Mouse, Rat

Source:

Rabbit

Isotype:

IgG

Applications:

ELISA, IHC

Recommended dilutions:

ELISA:1:2000-1:5000, IHC:1:25-1:100

Protein Background:

The Spata6 gene consists of 15 exons ranging in size between 40 and 596 bp. It may play a role in spermatid maturation or sperm function. The Spata6 gene was localized to chromosome 5, region q34-35 in the rat and to chromosome 1, region p32-35 in the human.

Gene ID:

SPATA6

Uniprot

Q9NWH7

Synonyms:

spermatogenesis associated 6

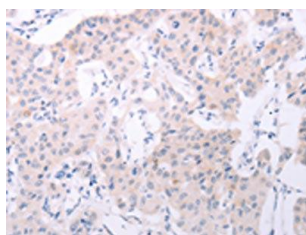
Immunogen:

Fusion protein of human SPATA6.

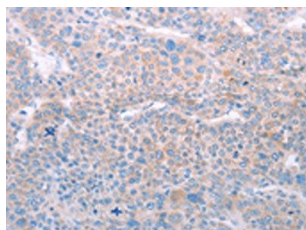
Storage:

-20° C, pH7.4 PBS, 0.05% NaN3, 40% Glycerol

Product Images



The image on the left is immunohistochemistry of paraffin-embedded Human lung cancer tissue using PACO15160(SPATA6 Antibody) at dilution 1/50, on the right is treated with fusion protein. (Original magnification: x—200).



The image on the left is immunohistochemistry of paraffin-embedded Human liver cancer tissue using PACO15160(SPATA6 Antibody) at dilution 1/50, on the right is treated with fusion protein. (Original magnification: x—200).