

TIMP3 Antibody



PACO15115

Product Information

Size:

50ul

Reactivity:

Human, Mouse, Rat

Source:

Rabbit

Isotype:

IgG

Applications:

ELISA, WB, IHC

Recommended dilutions:

ELISA:1:1000-1:2000, WB:1:200-1:1000,
IHC:1:15-1:50

Protein Background:

This gene belongs to the TIMP gene family. The proteins encoded by this gene family are inhibitors of the matrix metalloproteinases, a group of peptidases involved in degradation of the extracellular matrix (ECM). Expression of this gene is induced in response to mitogenic stimulation and this netrin domain-containing protein is localized to the ECM. Mutations in this gene have been associated with the autosomal dominant disorder Sorsby's fundus dystrophy.

Gene ID:

TIMP3

Uniprot

P35625

Synonyms:

TIMP metalloproteinase inhibitor 3

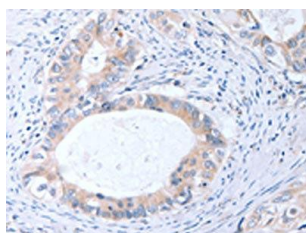
Immunogen:

Fusion protein of human TIMP3.

Storage:

-20° C, pH7.4 PBS, 0.05% NaN₃, 40% Glycerol

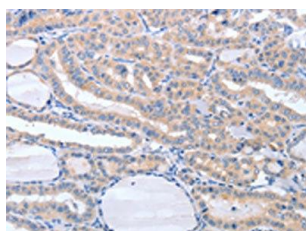
Product Images



The image on the left is immunohistochemistry of paraffin-embedded Human cervical cancer tissue using PACO15115(TIMP3 Antibody) at dilution 1/20, on the right is treated with fusion protein. (Original magnification: x—200).



Gel: 12%SDS-PAGE, Lysate: 40 μ g, Lane: Huvec cells, Primary antibody: PACO15115(TIMP3 Antibody) at dilution 1/250, Secondary antibody: Goat anti rabbit IgG at 1/8000 dilution, Exposure time: 10 seconds.



The image on the left is immunohistochemistry of paraffin-embedded Human thyroid cancer tissue using PACO15115(TIMP3 Antibody) at dilution 1/20, on the right is treated with fusion protein. (Original magnification: x—200).