

# SYVN1 Antibody



PACO15072

---

## Product Information

**Size:**

50ul

**Reactivity:**

Human, Mouse

**Source:**

Rabbit

**Isotype:**

IgG

**Applications:**

ELISA, WB, IHC

**Recommended dilutions:**

ELISA:1:1000-1:2000, WB:1:200-1:1000,  
IHC:1:25-1:100

**Protein Background:**

This gene encodes a protein involved in endoplasmic reticulum (ER)-associated degradation. The encoded protein removes unfolded proteins, accumulated during ER stress, by retrograde transport to the cytosol from the ER. This protein also uses the ubiquitin-proteasome system for additional degradation of unfolded proteins. Sequence analysis identified two transcript variants that encode different isoforms.

**Gene ID:**

SYVN1

**Uniprot**

Q86TM6

**Synonyms:**

Synovial apoptosis inhibitor 1, synoviolin

**Immunogen:**

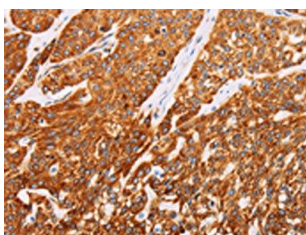
Fusion protein of human SYVN1.

**Storage:**

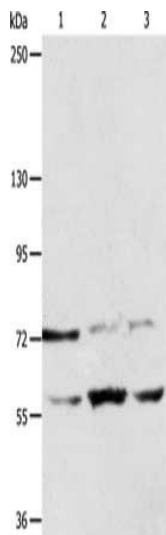
-20&deg; C, pH7.4 PBS, 0.05% NaN3, 40% Glycerol

## Product Images

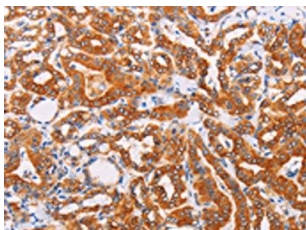
---



The image on the left is immunohistochemistry of paraffin-embedded Human esophagus cancer tissue using PACO15072(SYVN1 Antibody) at dilution 1/10, on the right is treated with fusion protein. (Original magnification: x—200).



Gel: 8%SDS-PAGE, Lysate: 40 &mu; g, Lane 1-3: Lovo cells, hela cells, 293T cells, Primary antibody: PACO15072(SYVN1 Antibody) at dilution 1/100, Secondary antibody: Goat anti rabbit IgG at 1/8000 dilution, Exposure time: 1 minute.



The image on the left is immunohistochemistry of paraffin-embedded Human thyroid cancer tissue using PACO15072(SYVN1 Antibody) at dilution 1/10, on the right is treated with fusion protein. (Original magnification: x—200).