

SPIN4 Antibody



PACO15035

Product Information

Size:

50ul

Reactivity:

Human, Mouse

Source:

Rabbit

Isotype:

IgG

Applications:

ELISA, WB, IHC

Recommended dilutions:

ELISA:1:1000-1:2000, WB:1:200-1:1000,
IHC:1:25-1:100

Protein Background:

SPIN4 (spindlin family, member 4), is a 249 amino acid, its exact function is not known.

Gene ID:

SPIN4

Uniprot

Q56A73

Synonyms:

spindlin family, member 4

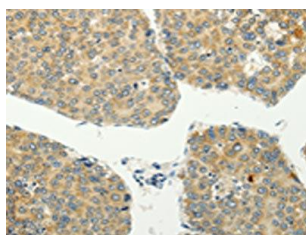
Immunogen:

Full length fusion protein.

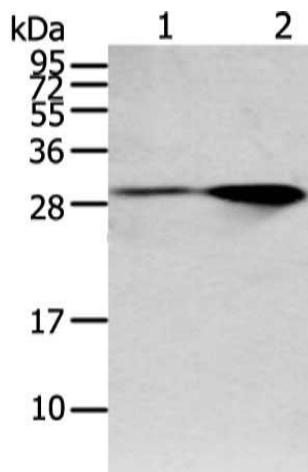
Storage:

-20° C, pH7.4 PBS, 0.05% NaN3, 40% Glycerol

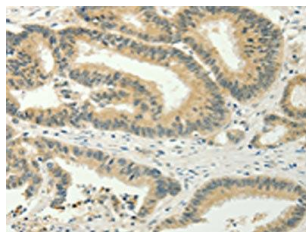
Product Images



The image on the left is immunohistochemistry of paraffin-embedded Human liver cancer tissue using PACO15035 (SPIN4 Antibody) at dilution 1/20, on the right is treated with fusion protein. (Original magnification: x—200).



Gel: 12%SDS-PAGE, Lysate: 40 μ g, Lane 1-2: Mouse brain and human fetal brain tissue, Primary antibody: PACO15035 (SPIN4 Antibody) at dilution 1/200 dilution, Secondary antibody: Goat anti rabbit IgG at 1/8000 dilution, Exposure time: 1 minute.



The image on the left is immunohistochemistry of paraffin-embedded Human colon cancer tissue using PACO15035 (SPIN4 Antibody) at dilution 1/20, on the right is treated with fusion protein. (Original magnification: x—200).