

Product Information

Size:

50ul

Reactivity:

Human, Mouse, Rat

Source:

Rabbit

Isotype:

IgG

Applications:

ELISA, WB, IHC

Recommended dilutions:

ELISA:1:1000-1:2000, WB:1:200-1:1000,
IHC:1:25-1:100

Protein Background:

The protein encoded by this gene is a member of the chromogranin/secretogranin family of neuroendocrine secretory proteins. Granins may serve as precursors for biologically active peptides. Some granins have been shown to function as helper proteins in sorting and proteolytic processing of prohormones; however, the function of this protein is unknown. Two transcript variants encoding different isoforms have been found for this gene.

Gene ID:

SCG3

Uniprot

Q8WXD2

Synonyms:

Secretogranin III

Immunogen:

Fusion protein of human SCG3.

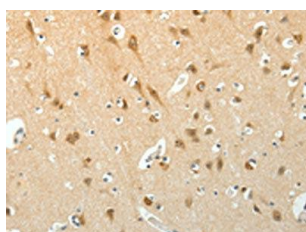
Storage:

-20° C, pH7.4 PBS, 0.05% NaN3, 40% Glycerol

Product Images



Gel: 10%SDS-PAGE, Lysate: 40 μ g, Lane: Mouse intestinum tenue tissue, Primary antibody: PACO14970(SCG3 Antibody) at dilution 1/200, Secondary antibody: Goat anti rabbit IgG at 1/8000 dilution, Exposure time: 2 minutes.



The image on the left is immunohistochemistry of paraffin-embedded Human brain tissue using PACO14970(SCG3 Antibody) at dilution 1/15, on the right is treated with fusion protein. (Original magnification: x—200).