

Product Information

Size:

50ul

Reactivity:

Human, Mouse

Source:

Rabbit

Isotype:

IgG

Applications:

ELISA, WB

Recommended dilutions:

ELISA:1:2000-1:5000, WB:1:500-1:2000

Protein Background:

Prostaglandin E synthase 2 is an enzyme that in humans is encoded by the PTGES2 gene. The protein encoded by this gene is a membrane-associated prostaglandin E synthase, which catalyzes the conversion of prostaglandin H2 to prostaglandin E2. This protein also has been shown to activate the transcription regulated by a gamma-interferon-activated transcription element (GATE). Multiple transcript variants have been found for this gene.

Gene ID:

PTGES2

Uniprot

Q9H7Z7

Synonyms:

Prostaglandin E synthase 2

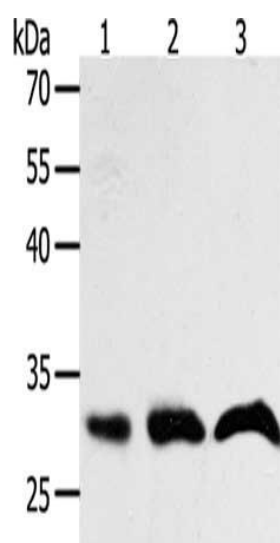
Immunogen:

Fusion protein of human PTGES2.

Storage:

-20° C, pH7.4 PBS, 0.05% NaN3, 40% Glycerol

Product Images



Gel: 10%SDS-PAGE, Lysate: 40 μ g, Lane 1-3: HeLa cells, A549 cells, Incap cells, Primary antibody: PACO14943(PTGES2 Antibody) at dilution 1/400, Secondary antibody: Goat anti rabbit IgG at 1/8000 dilution, Exposure time: 20 seconds.