

PACO14906

---

## Product Information

**Size:**

50ul

**Reactivity:**

Human, Mouse

**Source:**

Rabbit

**Isotype:**

IgG

**Applications:**

ELISA, WB, IHC

**Recommended dilutions:**

ELISA:1:1000-1:2000, WB:1:200-1:1000,  
IHC:1:25-1:100

**Protein Background:**

The protein encoded by this gene is a lysosomal prolylcarboxypeptidase, which cleaves C-terminal amino acid, linked to proline in peptides such as angiotension II, III and des-Arg9-bradykinin. The cleavage occurs at acid, c pH, but the enzyme activity is retained with some substrates at neutral pH. This enzyme has been shown to be an activator of the cell matrix-associated prekallikrein. The importance of angiotension II, one of the substrates of this enzyme, in regulating blood pressure and electrolyte balance suggests that this gene may be related to essential hypertension. Alternatively spliced transcript variants encoding distinct isoforms have been observed.

**Gene ID:**

PRCP

**Uniprot**

P42785

**Synonyms:**

Prolylcarboxypeptidase (angiotensinase C)

**Immunogen:**

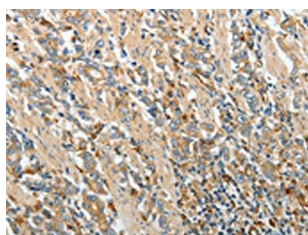
Fusion protein of human PRCP.

**Storage:**

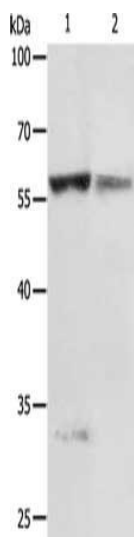
-20&deg; C, pH7.4 PBS, 0.05% NaN3, 40% Glycerol

## Product Images

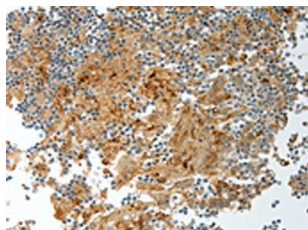
---



The image on the left is immunohistochemistry of paraffin-embedded Human gastric cancer tissue using PACO14906(PRCP Antibody) at dilution 1/20, on the right is treated with fusion protein. (Original magnification: x—200).



Gel: 10%SDS-PAGE, Lysate: 50 &mu; g, Lane 1-2: Jurkat cells, human fetal liver tissue, Primary antibody: PACO14906(PRCP Antibody) at dilution 1/200, Secondary antibody: Goat anti rabbit IgG at 1/8000 dilution, Exposure time: 5 minutes.



The image on the left is immunohistochemistry of paraffin-embedded Human tonsil tissue using PACO14906(PRCP Antibody) at dilution 1/20, on the right is treated with fusion protein. (Original magnification: x—200).