

PACO14898

Product Information

Size:

50ul

Reactivity:

Human, Mouse

Source:

Rabbit

Isotype:

IgG

Applications:

ELISA, WB, IHC

Recommended dilutions:

ELISA:1:1000-1:2000, WB:1:200-1:1000,
IHC:1:10-1:50

Protein Background:

The protein encoded by this gene is a member of the RAMP family of single-transmembrane-domain proteins, called receptor (calcitonin) activity modifying proteins (RAMPs). RAMPs are type I transmembrane proteins with an extracellular N terminus and a cytoplasmic C terminus. RAMPs are required to transport calcitonin-receptor-like receptor (CRLR) to the plasma membrane. CRLR, a receptor with seven transmembrane domains, can function as either a calcitonin-gene-related peptide (CGRP) receptor or an adrenomedullin receptor, depending on which members of the RAMP family are expressed. In the presence of this (RAMP1) protein, CRLR functions as a CGRP receptor. The RAMP1 protein is involved in the terminal glycosylation, maturation, and presentation of the CGRP receptor to the cell surface.

Gene ID:

RAMP1

Uniprot

O60894

Synonyms:

Receptor (G protein-coupled) activity modifying protein 1

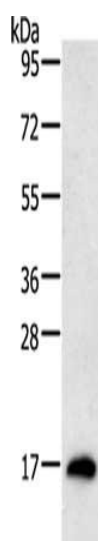
Immunogen:

Fusion protein of human RAMP1.

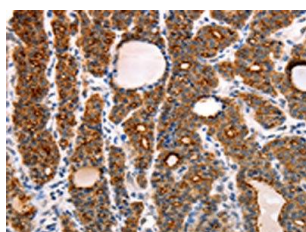
Storage:

-20° C, pH7.4 PBS, 0.05% NaN3, 40% Glycerol

Product Images



Gel: 12%SDS-PAGE, Lysate: 40 μ g, Lane: Mouse testis tissue, Primary antibody: PACO14898(RAMP1 Antibody) at dilution 1/200, Secondary antibody: Goat anti rabbit IgG at 1/8000 dilution, Exposure time: 10 minutes.



The image on the left is immunohistochemistry of paraffin-embedded Human thyroid cancer tissue using PACO14898(RAMP1 Antibody) at dilution 1/10, on the right is treated with fusion protein. (Original magnification: x—200).