

Product Information

Size:

50ul

Reactivity:

Human, Mouse, Rat

Source:

Rabbit

Isotype:

IgG

Applications:

ELISA, WB, IHC

Recommended dilutions:

ELISA:1:1000-1:2000, WB:1:200-1:1000,
IHC:1:50-1:200

Protein Background:

Myosin is a hexameric ATPase cellular motor protein. It is composed of two heavy chains, two nonphosphorylatable alkali light chains, and two phosphorylatable regulatory light chains. This gene encodes a myosin alkali light chain that is expressed in smooth muscle and non-muscle tissues. Genomic sequences representing several pseudogenes have been described and two transcript variants encoding different isoforms have been identified for this gene.

Gene ID:

MYL6

Uniprot

P60660

Synonyms:

myosin, light chain 6, alkali, smooth muscle and non-muscle

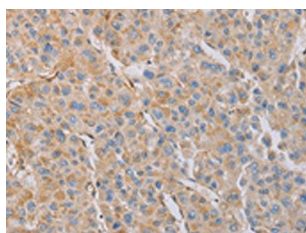
Immunogen:

Fusion protein of human MYL6.

Storage:

-20° C, pH7.4 PBS, 0.05% NaN₃, 40% Glycerol

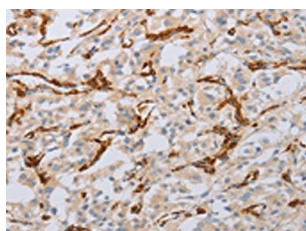
Product Images



The image on the left is immunohistochemistry of paraffin-embedded Human liver cancer tissue using PACO14746(MYL6 Antibody) at dilution 1/50, on the right is treated with fusion protein. (Original magnification: x—200).



Gel: 10%SDS-PAGE, Lysate: 40 μ g, Lane: Mouse stomach tissue, Primary antibody: PACO14746(MYL6 Antibody) at dilution 1/262.5, Secondary antibody: Goat anti rabbit IgG at 1/8000 dilution, Exposure time: 30 seconds.



The image on the left is immunohistochemistry of paraffin-embedded Human thyroid cancer tissue using PACO14746(MYL6 Antibody) at dilution 1/50, on the right is treated with fusion protein. (Original magnification: x—200).